

for
Allan Mark Angell
 Angell Hasman & Associates
 (The Angell Group)
 1555 Marine Drive
 West Vancouver, B.C.
 Tel: 604-921-1188
 Fax: 604-921-1199

PROJECT:
2236
 Nelson Avenue

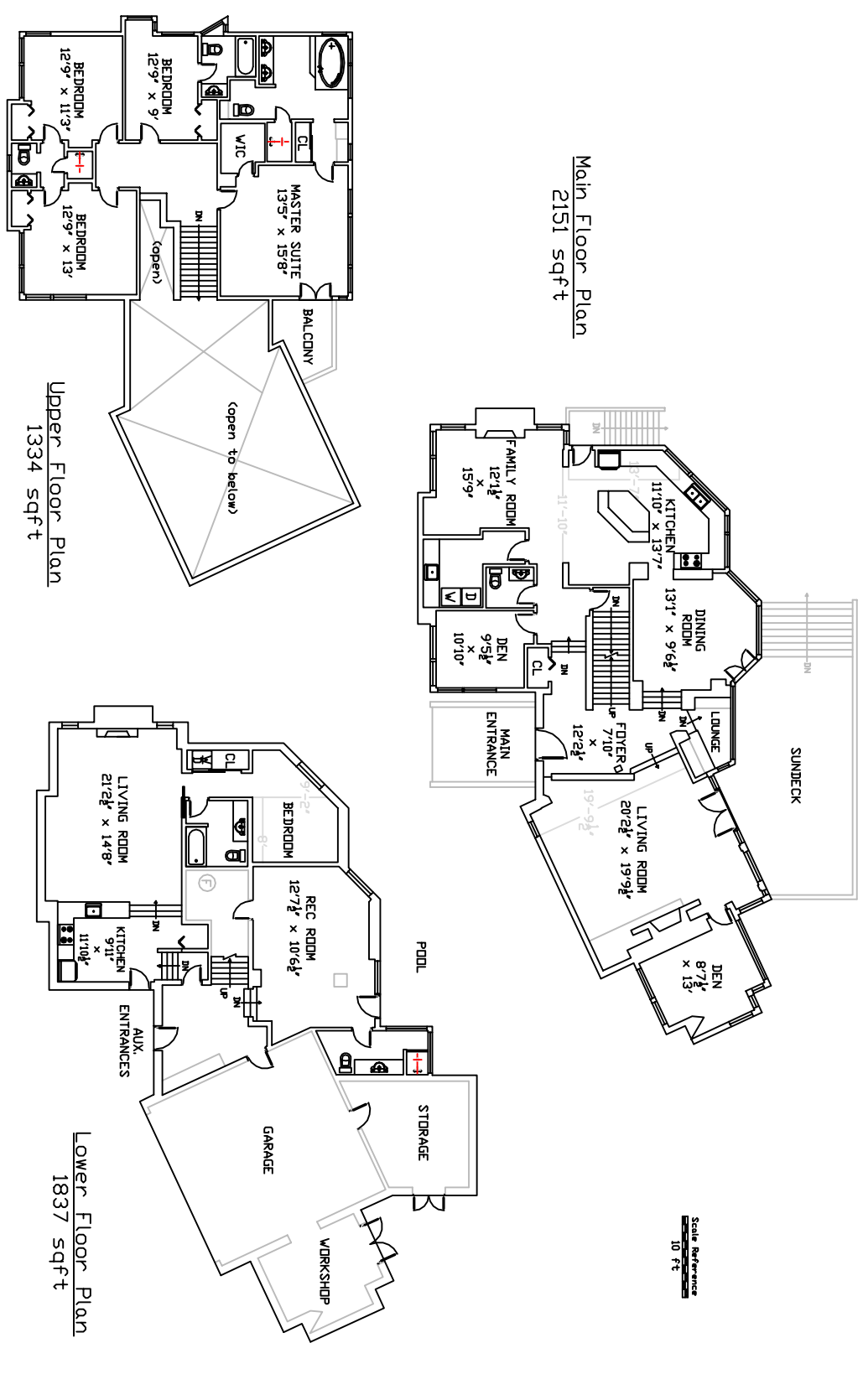
DRAWING:
 All Floors

CONSULTANT:
 pointsourcemedia
 www.pointsourcemedia.ca
 604-839-8889

DATE: 26/09/08
 SCALE: As shown
 DRAWN: Colen Low
 CHECKED:
 COMMENTS:

NO.	DATE	DETAILS

DRAWING NO.:
000014b



TOTAL FINISHED AREA
5322 sqft

2236 Nelson Avenue - West Vancouver

Total floor area calculations are based on the architect's original blueprints and are not intended to be used for any other purpose. Areas of unfinished space and areas of finished areas separated by unfinished space. Individual room dimensions have been calculated based on the largest rectangular space accommodated by the interior surfaces of those walls. This document is intended to communicate the layout of the property for real estate purposes only. It is not an official architectural document.