

for
Allan Mark Angell
Angell Hasman & Associates
(The Angell Group)
1555 Marine Drive
West Vancouver, B.C.
Tel: 604-921-1188
Fax: 604-921-1199

PROJECT:
3856
Marine Drive

DRAWING:
All Floors

CONSULTANT:

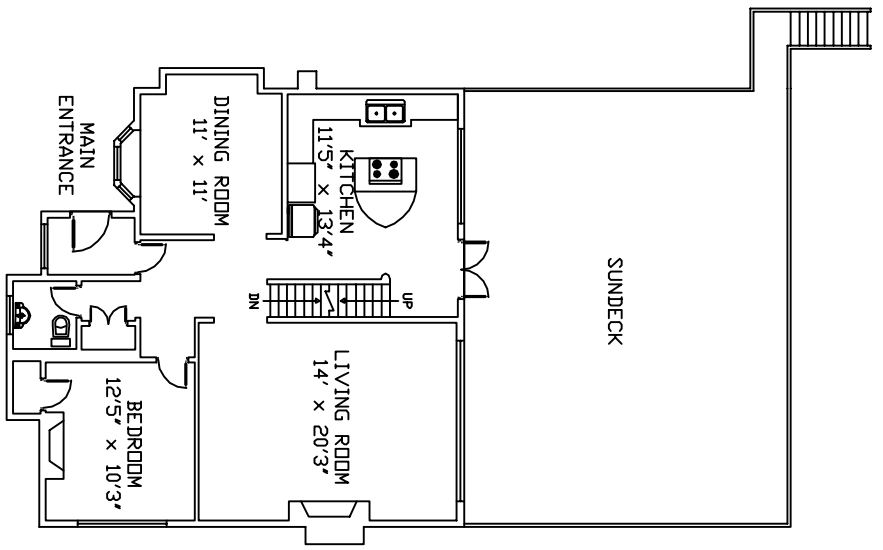
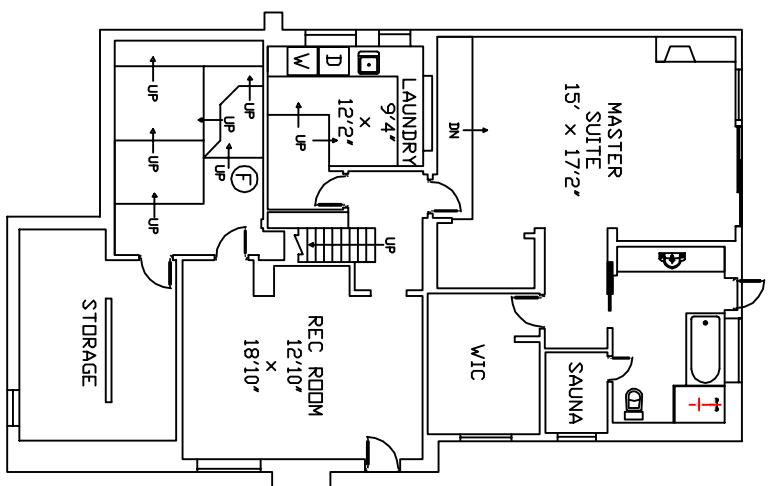
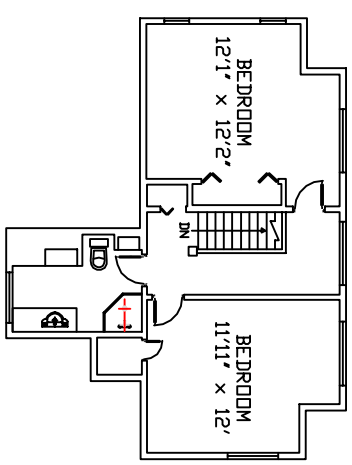
POINT SOURCE
MEDIA
www.pointsourcemedia.ca
604-839-8889

DATE: 13/03/07
SCALE: As shown
DRAWN: Colen Low
CHECKED:
COMMENTS:

NO.	DATE	DETAILS

DRAWING NO.:
0000063

SHEET: **1** of **1**



TOTAL FINISHED AREA
3354 sqft

Total floor area calculations are based on measurements taken from the outside surface of the exterior walls.
Individual room dimensions have been calculated based on the largest rectangular space accommodated by the interior surfaces of those walls.
Calculations do not include porches, patios, decks, garages, carpenter's, mechanical and electrical rooms, crawl spaces, and any other unfinished areas.
All measurements are subject to errors not exceeding 20%.

3856 Marine Drive - West Vancouver